

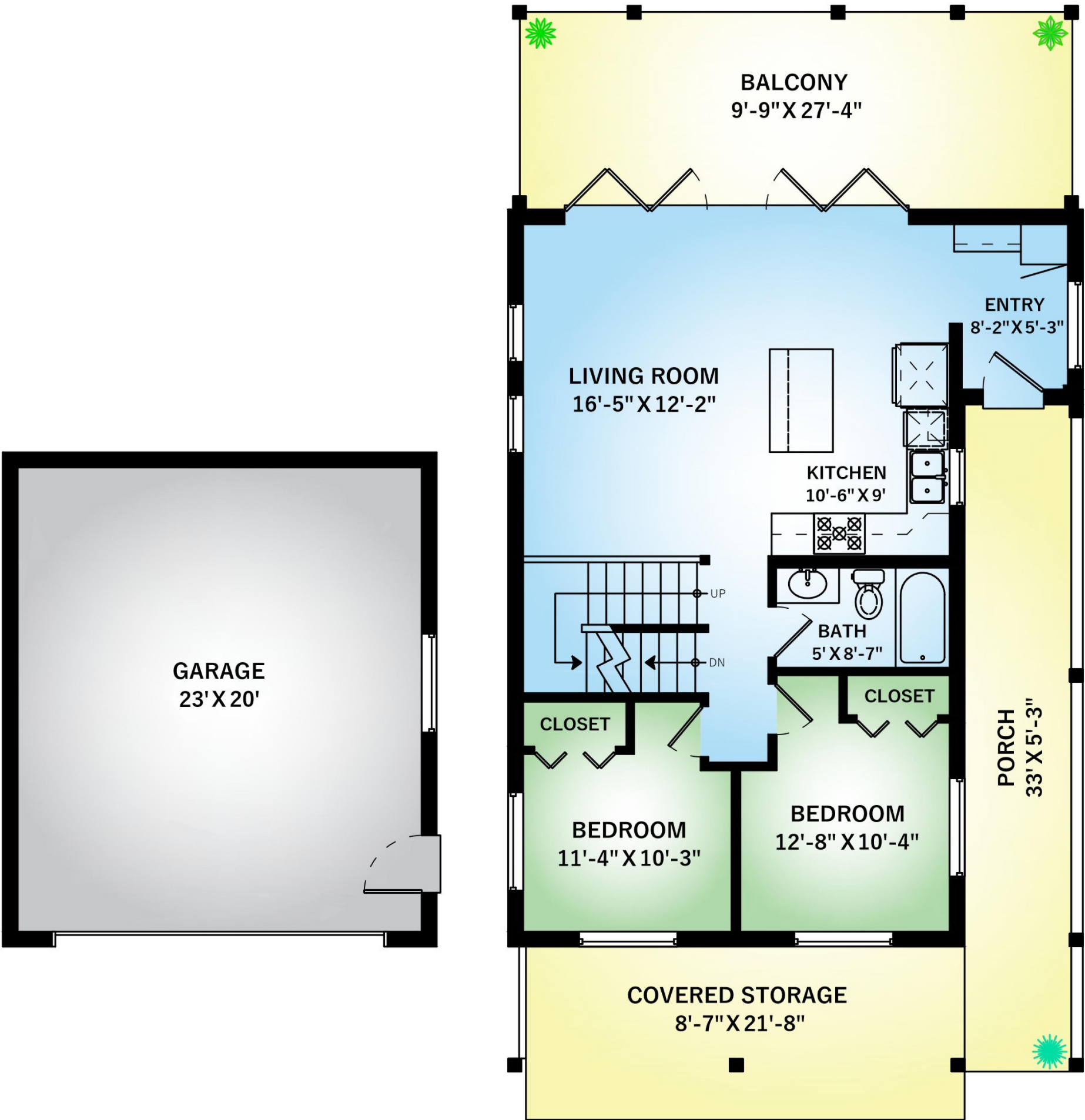
9646 CREEKSIDE DR

LAKE COWICHAN, BC

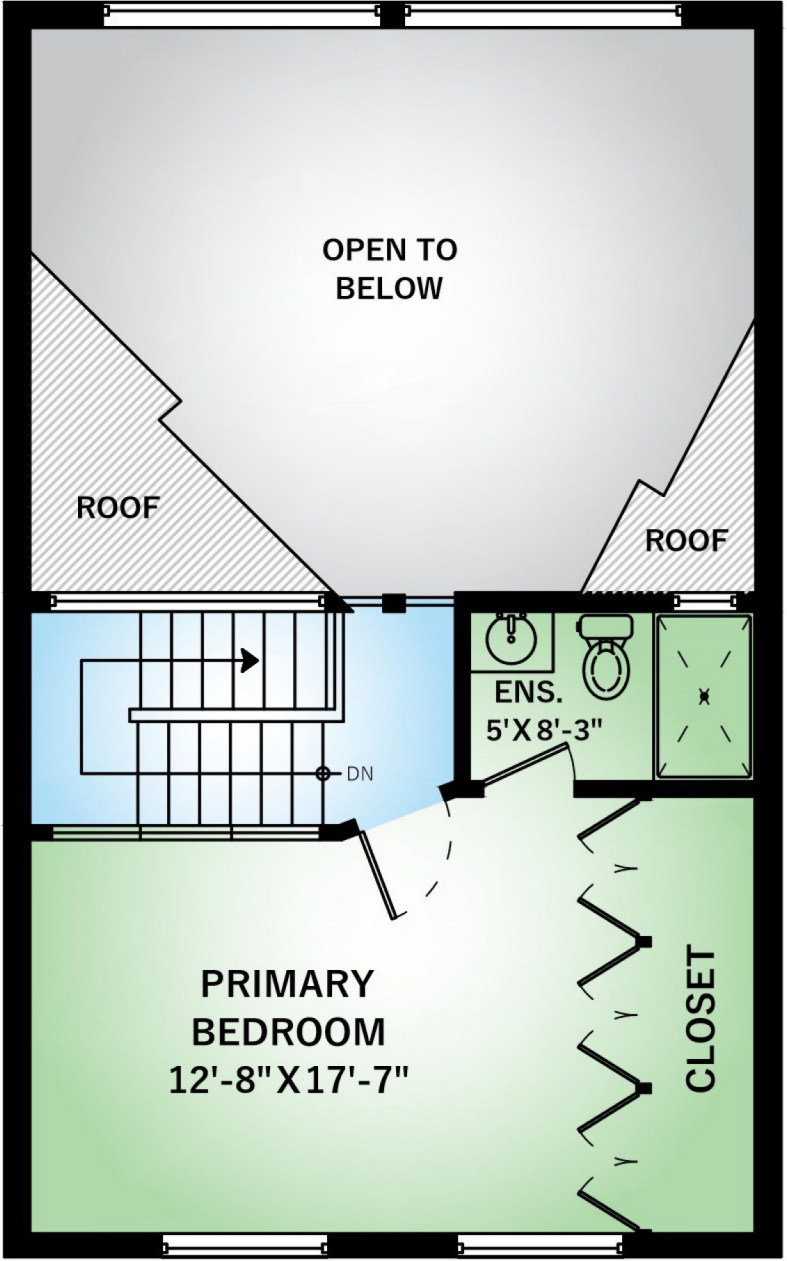
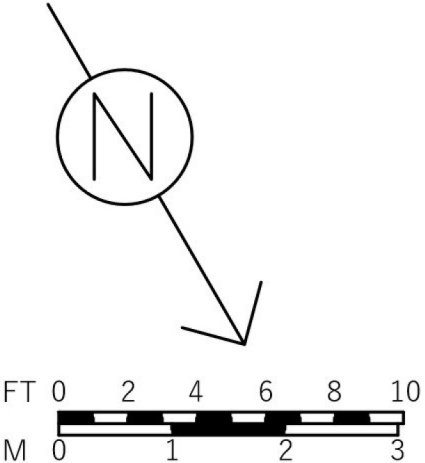
Main Floor	877 SQ.FT.
Upper Floor	435 SQ.FT.
Lower Floor	821 SQ.FT.
Basemant	396 SQ.FT.
Total	2529 SQ.FT.

Deck	226 SQ.FT.
Deck	416 SQ.FT.
Lower Storage	41 SQ.FT.
Porch / Storage	377 SQ.FT.
Balcony	266 SQ.FT.
Garage	523 SQ.FT.
Dock	471 SQ.FT.
Total Extras	2320 SQ.FT.

Open To Below 386 SQ.FT.



Main Floor: 877 Sq.Ft.
Ceiling Height: 8' / Peak: 16'-2"



Upper Floor: 435 Sq.Ft.
Ceiling Peak Height: 9'-9"

SUPPLIED BY:

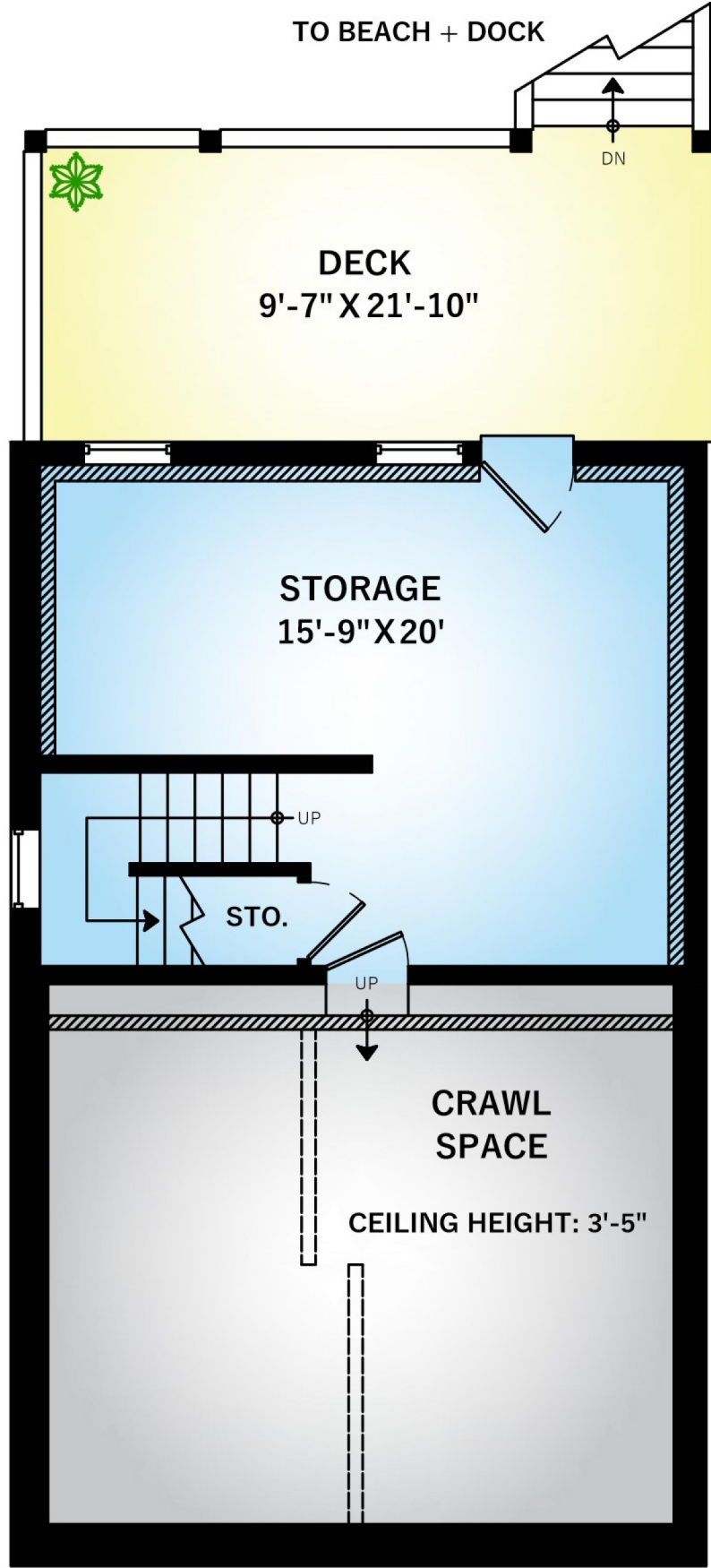


WWW.ISELLVICTORIA.CA

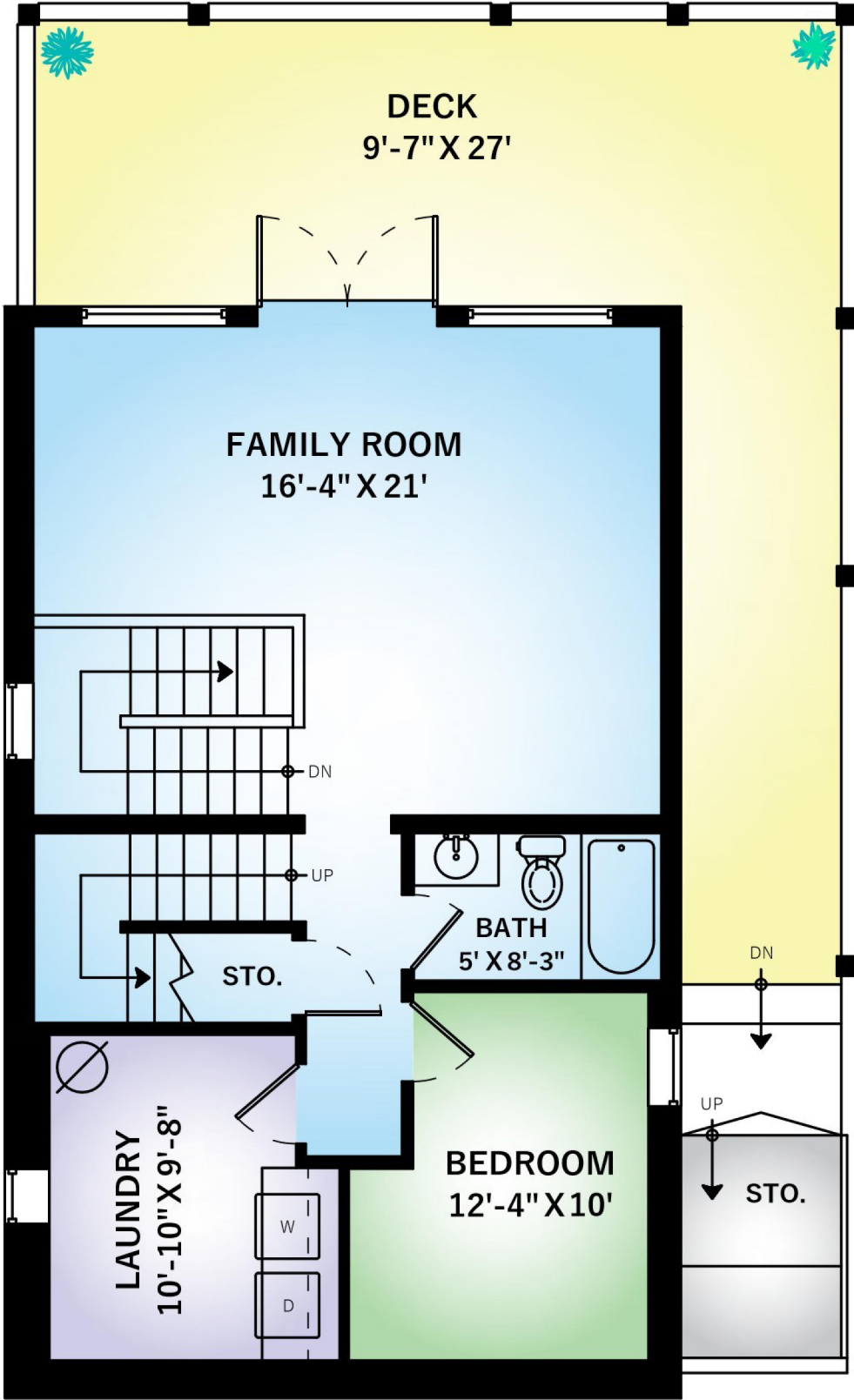
Floor plan not suitable for architectural/construction purposes. All information furnished is from sources deemed reliable however no warranty or representation is made to the accuracy thereof. If important, buyer to verify.

9646 CREEKSIDE DR

LAKE COWICHAN, BC



Basement: 396 Sq.Ft.
Ceiling Height: 7'-10"

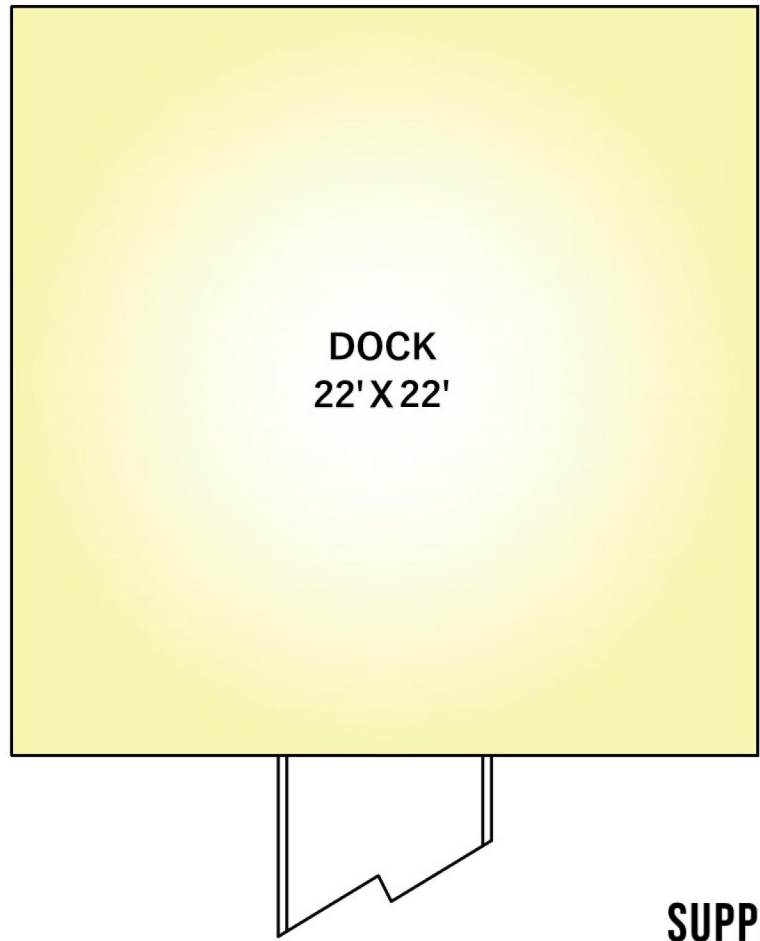
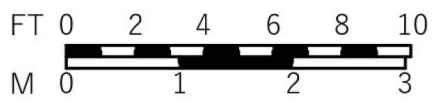
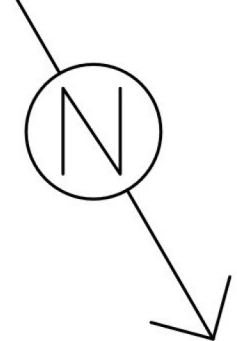


Lower Floor: 821 Sq.Ft.
Ceiling Height: 8'

Main Floor	877 SQ.FT.
Upper Floor	435 SQ.FT.
Lower Floor	821 SQ.FT.
Basemant	396 SQ.FT.
Total	2529 SQ.FT.

Deck	226 SQ.FT.
Deck	416 SQ.FT.
Lower Storage	41 SQ.FT.
Porch / Storage	377 SQ.FT.
Balcony	266 SQ.FT.
Garage	523 SQ.FT.
Dock	471 SQ.FT.
Total Extras	2320 SQ.FT.

Open To Below 386 SQ.FT.



SUPPLIED BY:



Floor plan not suitable for architectural/construction purposes. All information furnished is from sources deemed reliable however no warranty or representation is made to the accuracy thereof. If important, buyer to verify.